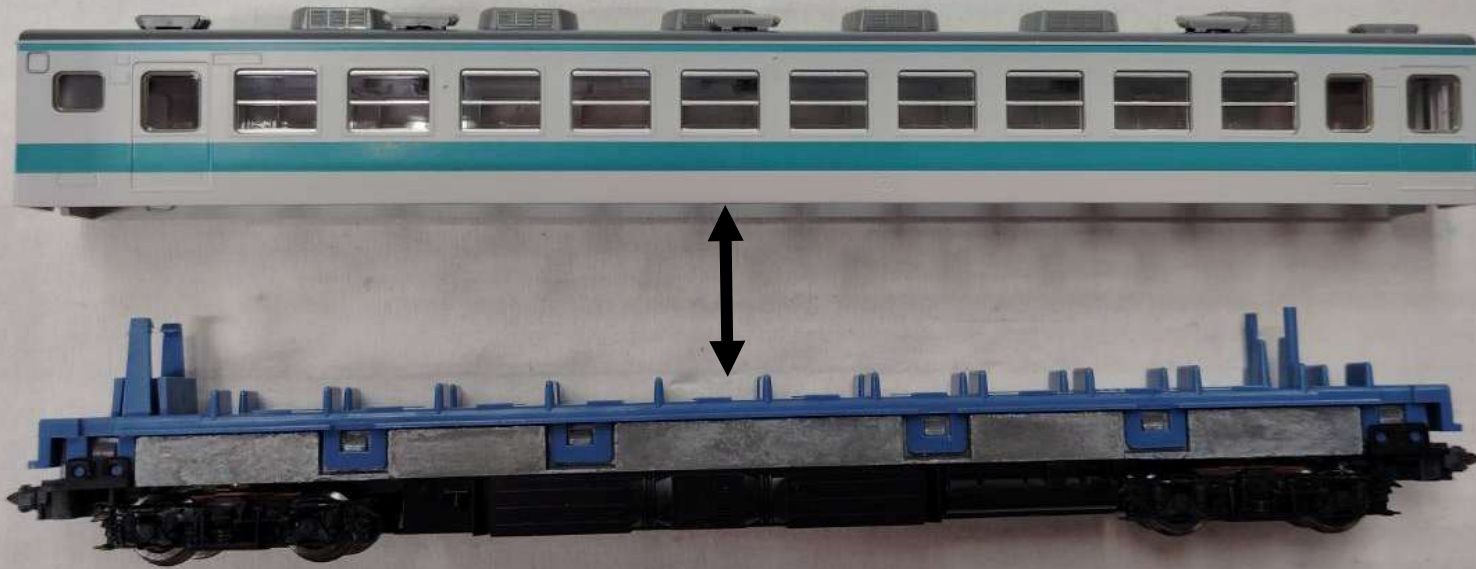


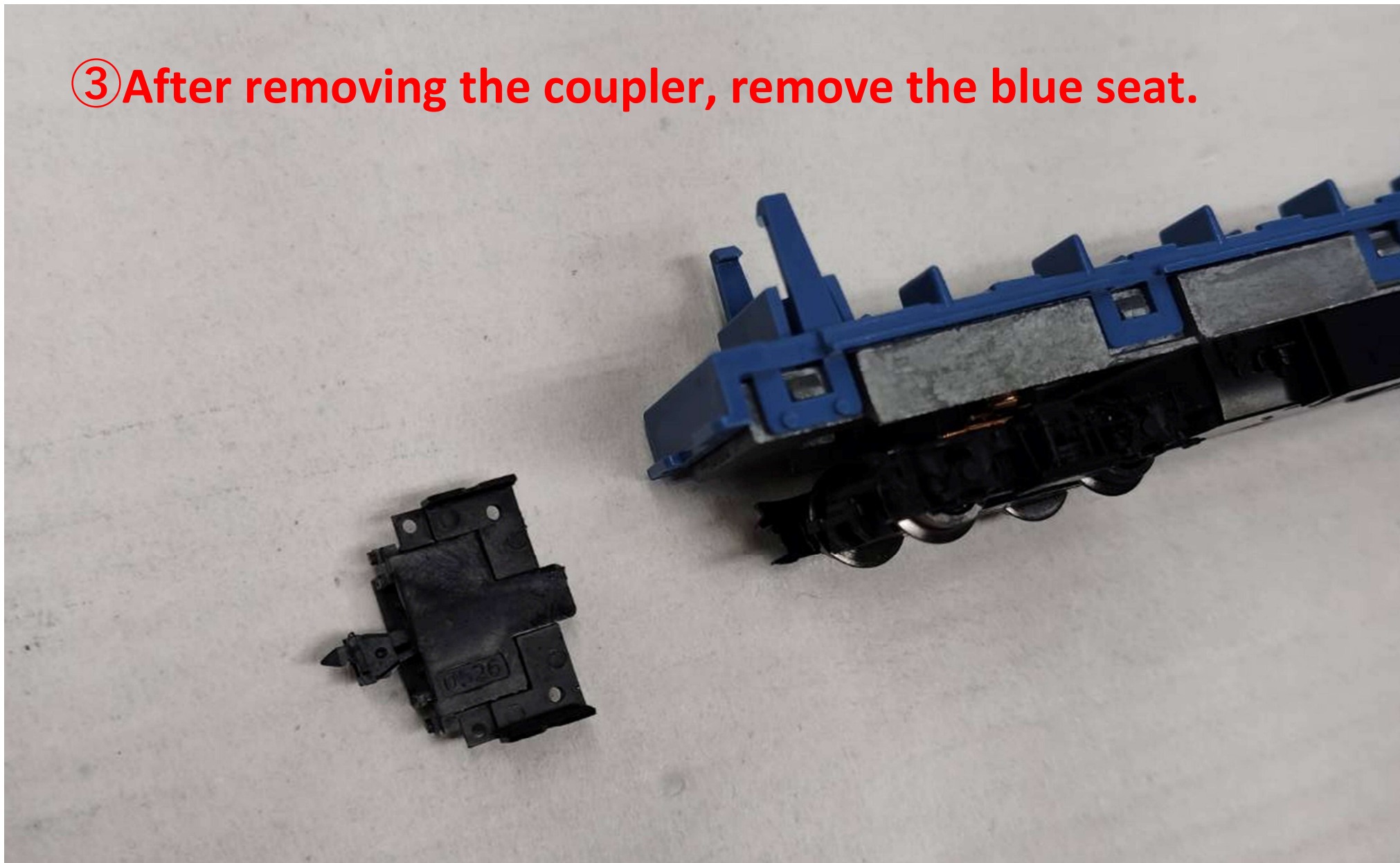
① Dismantle the main body and underfloor.



② Before removing the seat, remove the couplers on both ends with a flat-head screwdriver.

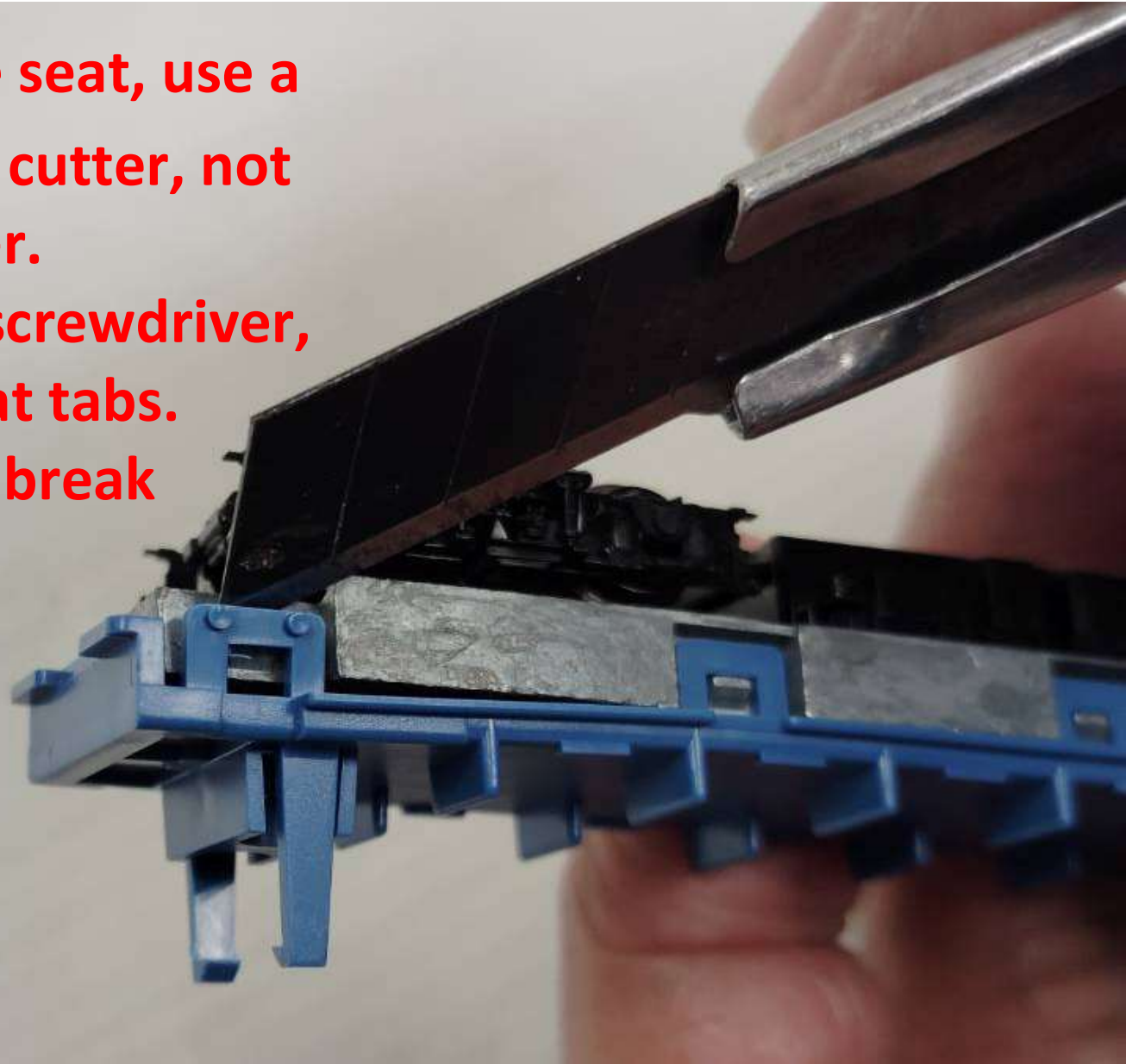


③ After removing the coupler, remove the blue seat.

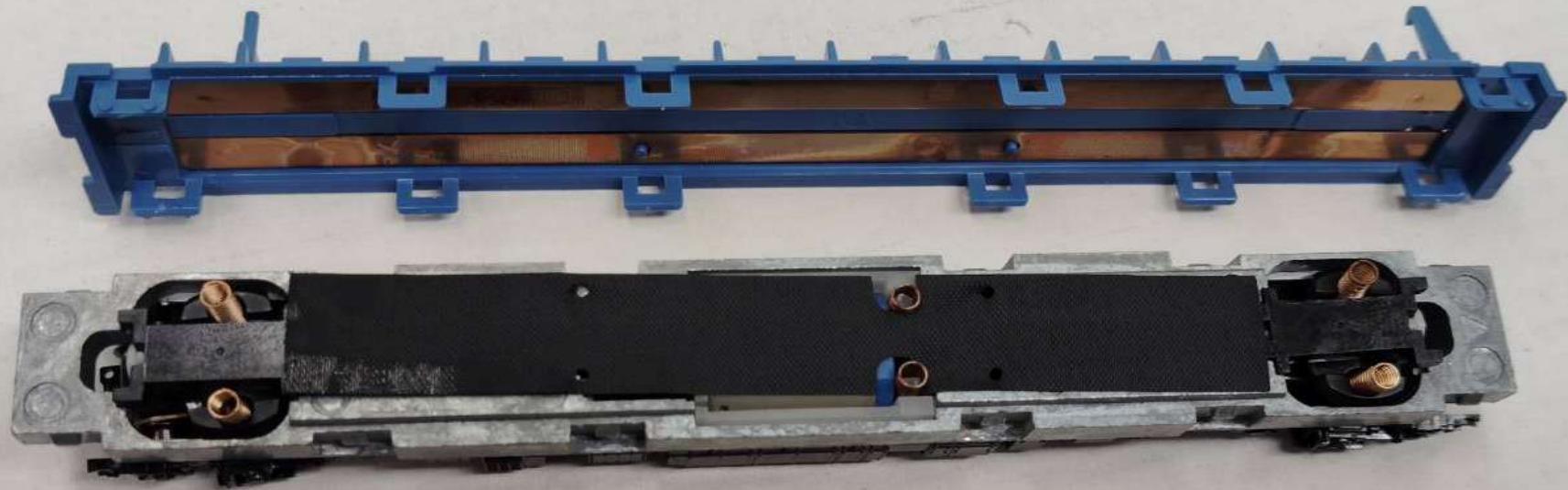


④ When removing the seat, use a sharp object such as a cutter, not a flat-head screwdriver.

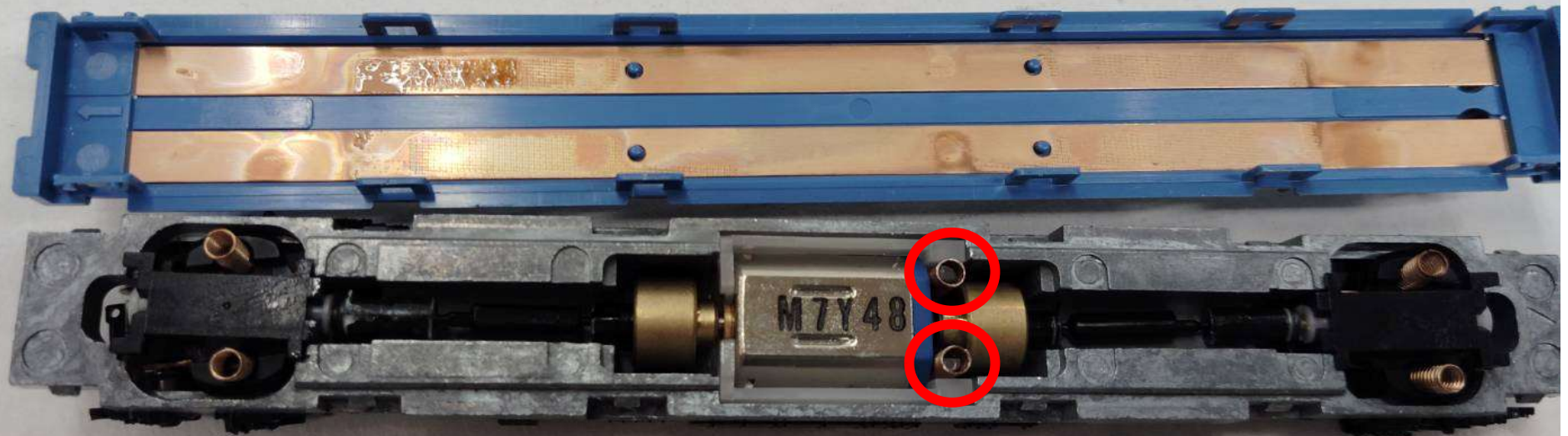
If you use a flat head screwdriver, you may break the seat tabs. Be careful as the nails break easily.



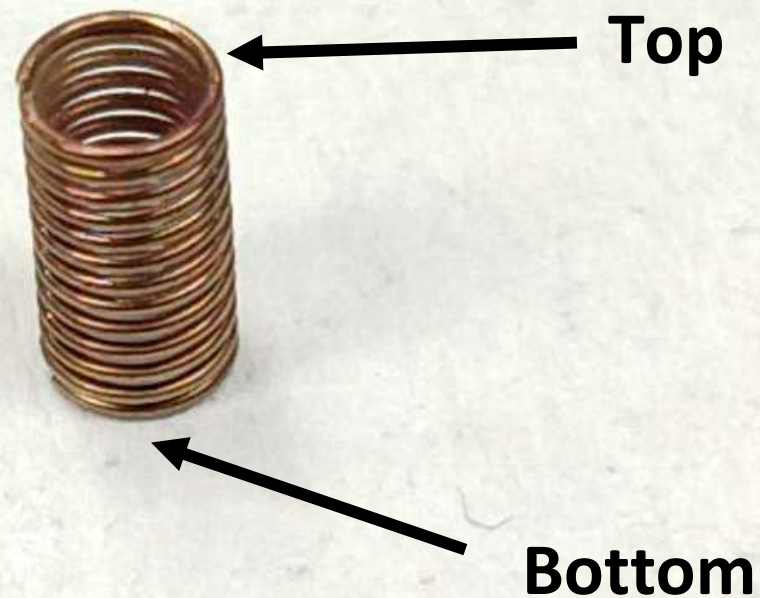
⑤ Once you have removed the seat, remove the black sheet.



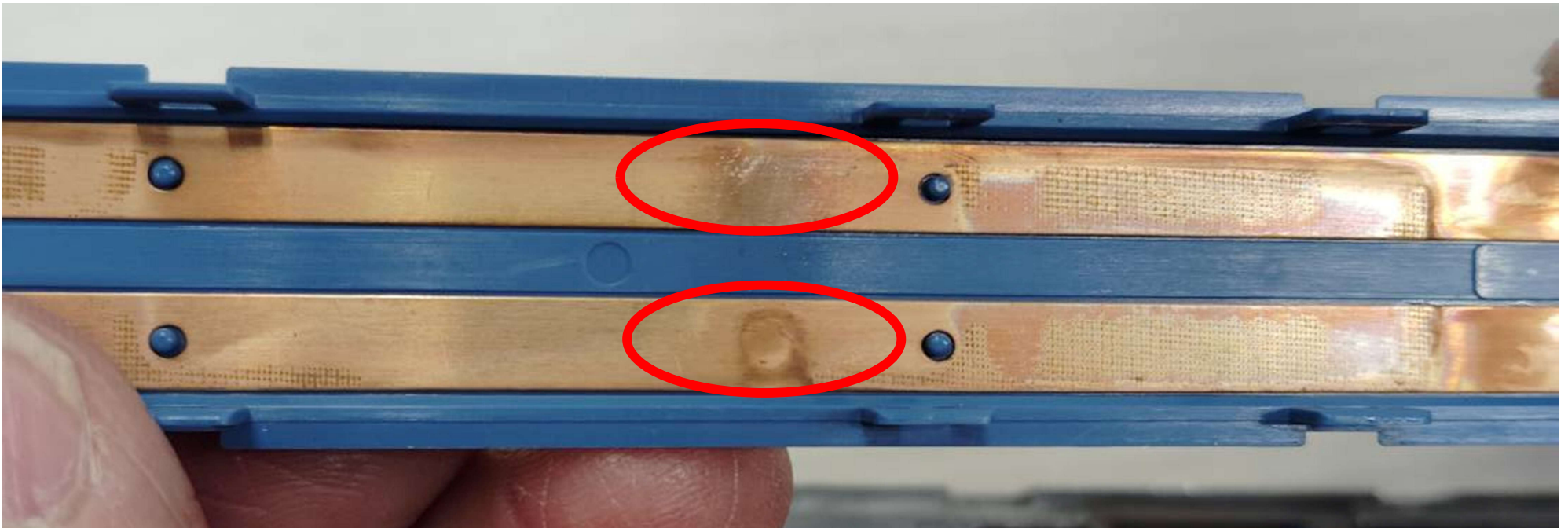
⑥ Once you can see the motor, use a file to polish the top and bottom of the spring indicated by the red circle.



⑦ For trains that have been on the market for a long time, the springs may have turned black, so if you polish the top and bottom, electricity should be able to flow again.



**⑧ Also polish the copper plate behind the seat slightly in any areas where there are spring marks.
The top is after polishing and the bottom is before polishing.**



⑨ And as a finishing touch, if you have it, apply 1-2 drops of model oil into the gaps in the motor.
We recommend KATO 24-021 Uniclean Oil.



Apply paint to the other side of the motor as well.



It would be better if you also painted the copper parts of the seat.



⑩ Finally, when installing the seat, be careful not to let the powered bogie (shown in a red circle) float. If it does, the seat will not fit neatly.

(The seat tabs don't fit properly.)

