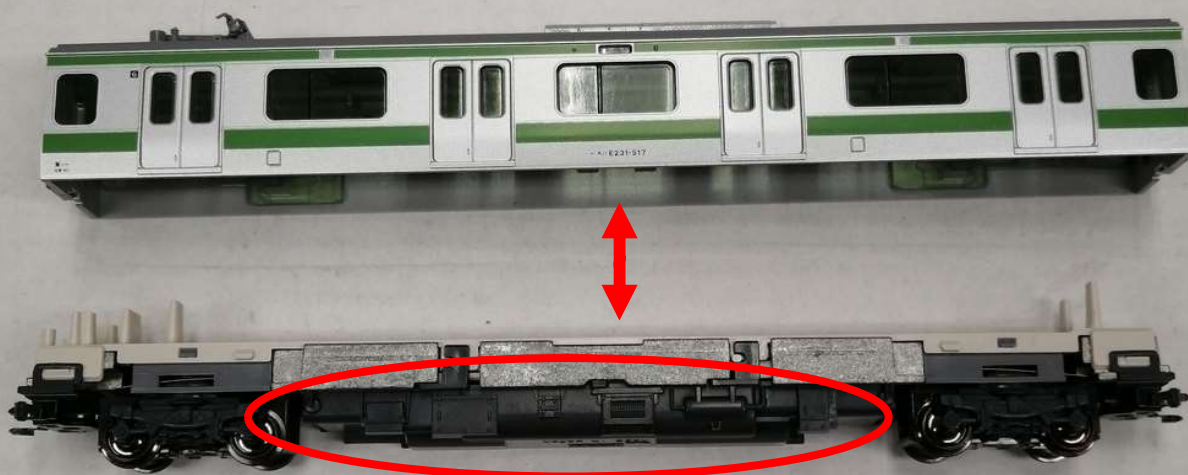


① Please prepare a power train first.

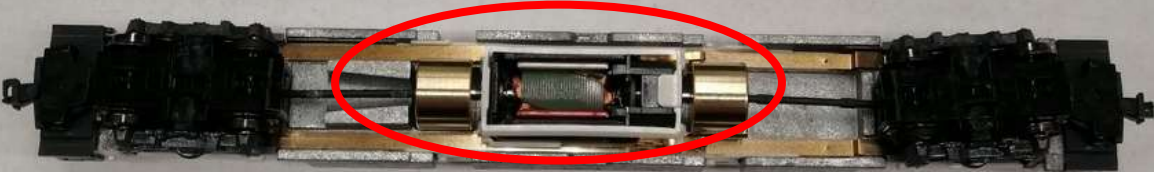


② Then remove the underfloor from the body.



③ Then remove the underfloor cover.

This is the state with the cover removed. ↓



This is the state where the motor is visible. ↑

If possible, this KATO Uni-Clean oil is preferable, but if you don't have it, you can use the lubricating oil for plastic models.

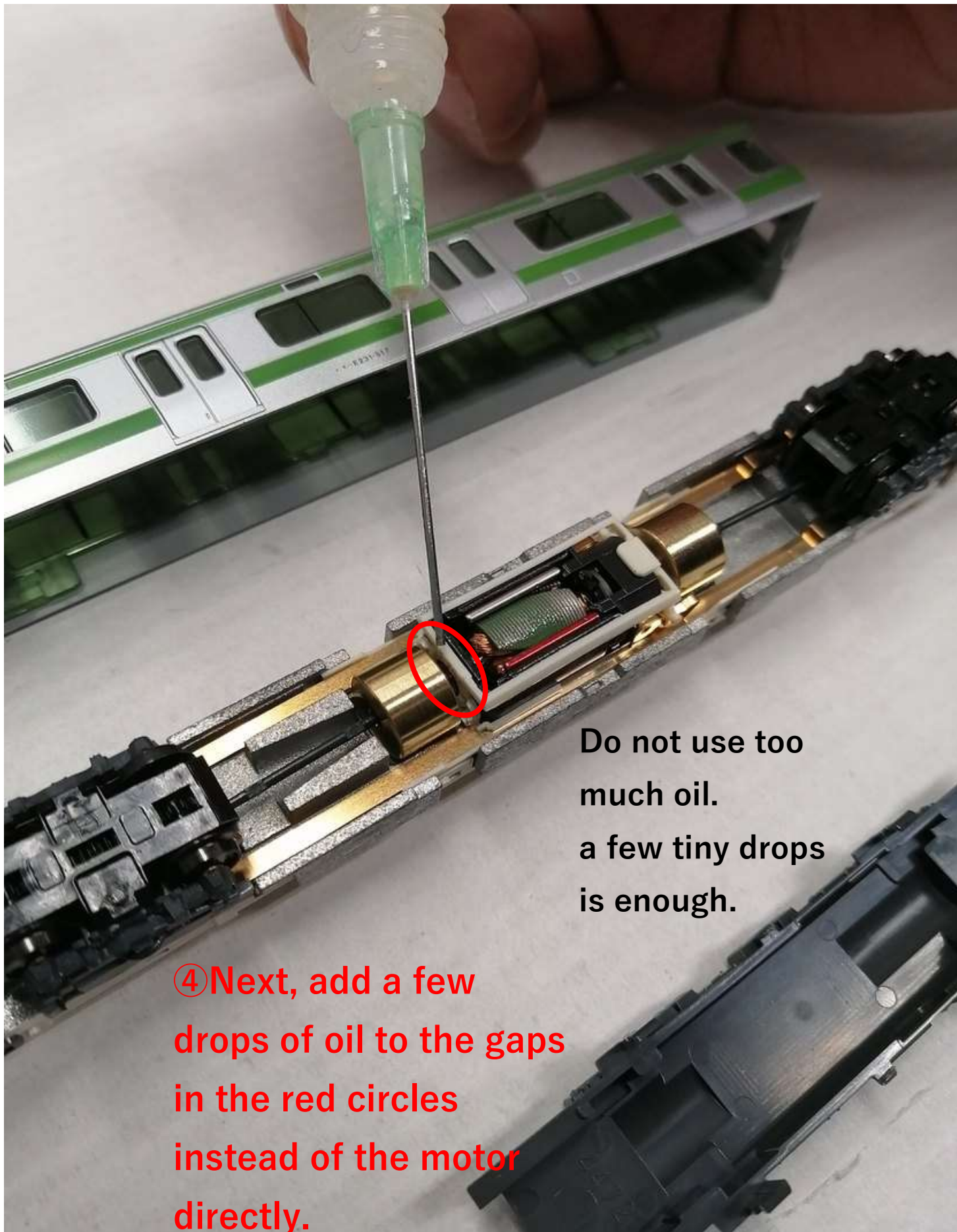


Never use mechanical oils.

If you can't get KATO Uni-Clean Oil , As an alternative, you can use LA BELLE Labelle Oil fine oil sold overseas.

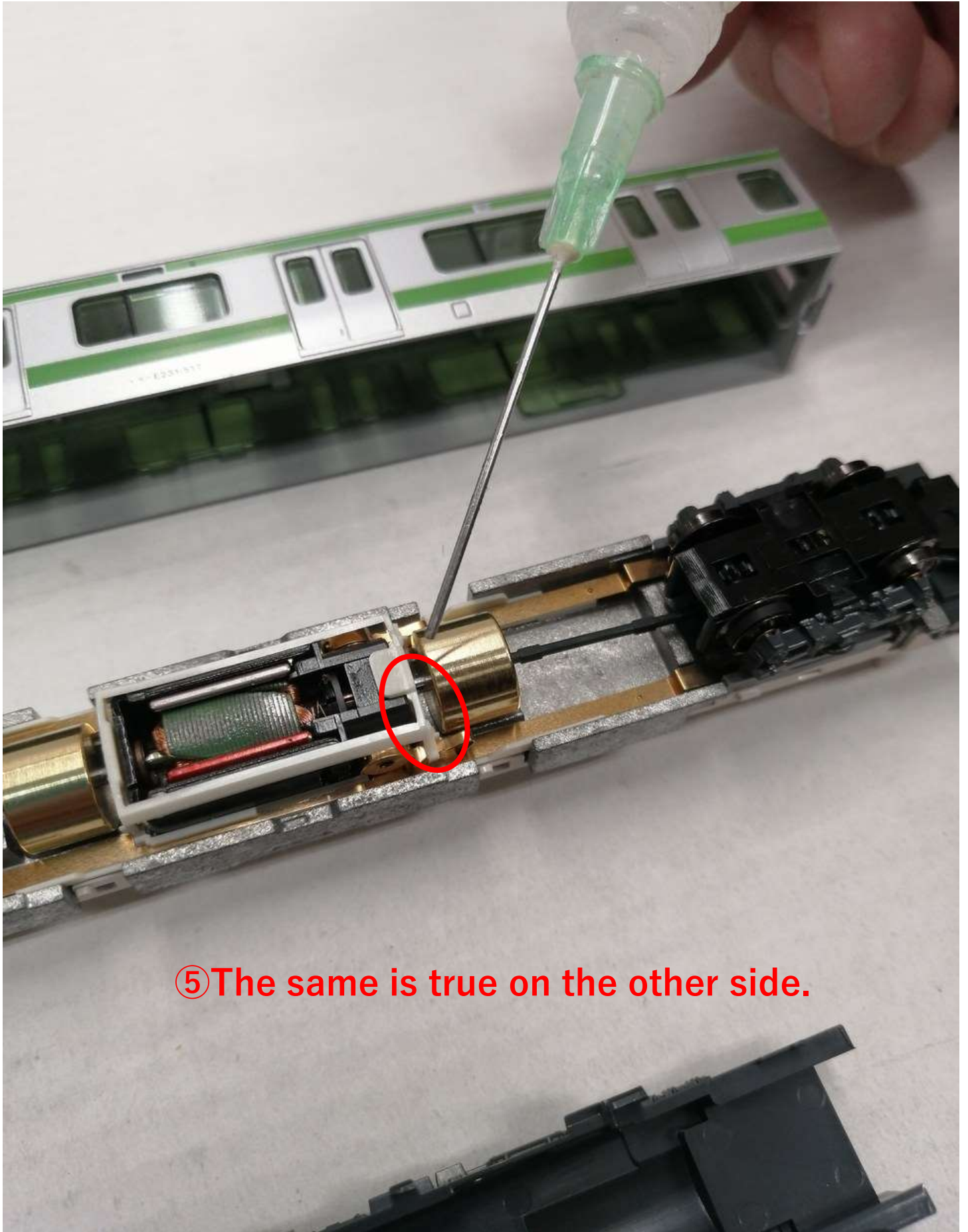


<https://www.amazon.co.uk/Labelle-Oil-fine-oil-locos/dp/B00AY0MNYW>



Do not use too much oil.  
a few tiny drops is enough.

④ Next, add a few drops of oil to the gaps in the red circles instead of the motor directly.



⑤ The same is true on the other side.

⑥ And finally, push the white frame of the motor part a little.

The reason for doing this is that if the motor is not properly seated, it may make a noise, so I will fit it firmly.

⑦ Then put it back and assemble it.

